

TRANSPLANTATION

High day 28 ST2 levels predict for acute graft-versus-host disease and transplant-related mortality after cord blood transplantation

Doris M. Ponce,^{1,2} Patrick Hilden,³ Christen Mumaw,⁴ Sean M. Devlin,³ Marissa Lubin,¹ Sergio Giralt,^{1,2} Jenna D. Goldberg,^{1,2} Alan Hanash,^{1,2} Katharine Hsu,^{1,2} Robert Jenq,^{1,2} Miguel-Angel Perales,^{1,2} Craig Sauter,^{1,2} Marcel R. M. van den Brink,^{1,2} James W. Young,^{1,2} Renier Brentjens,^{2,5} Nancy A. Kernan,⁶ Susan E. Prockop,⁶ Richard J. O'Reilly,^{2,6} Andromachi Scaradavou,⁶ Sophie Paczesny,⁴ and Juliet N. Barker^{1,2}

¹Adult Bone Marrow Transplantation Service, Department of Medicine, Memorial Sloan Kettering Cancer Center, New York, NY; ²Department of Medicine, Weill Cornell Medical College, New York, NY; ³Department of Epidemiology and Biostatistics, Memorial Sloan Kettering Cancer Center, New York, NY; ⁴Departments of Pediatrics and Immunology, Melvin and Bren Simon Cancer Center and Wells Center for Pediatric Research, Indiana University, Indianapolis, IN; and ⁵Leukemia Service, Department of Medicine, and ⁶Bone Marrow Transplantation Service, Department of Pediatrics, Memorial Sloan Kettering Cancer Center, New York, NY

Key Points

- ST2 is independently associated with aGVHD after day 28 in cord blood transplantation recipients.
- High ST2 levels predict for increased TRM in cord blood transplantation recipients.

While cord blood transplantation (CBT) is an effective therapy for hematologic malignancies, acute graft-versus-host disease (aGVHD) is a leading cause of transplant-related mortality (TRM). We investigated if biomarkers could predict aGVHD and TRM after day 28 in CBT recipients. Day 28 samples from 113 CBT patients were analyzed. Suppressor of tumorigenicity 2 (ST2) was the only biomarker associated with grades II-IV and III-IV aGVHD and TRM. Day 180 grade III-IV aGVHD in patients with high ST2 levels was 30% (95% confidence interval [CI], 18-43) vs 13% (95% CI, 5-23) in patients with low levels ($P = .024$). The adverse effect of elevated ST2 was independent of HLA match. Moreover, high day 28 ST2 levels were associated with increased TRM with day 180 estimates of 23% (95% CI, 13-35) vs 5% (95% CI, 1-13) if levels were low ($P = .001$). GVHD was the most common

cause of death in high ST2 patients. High concentrations of tumor necrosis factor receptor-1, interleukin-8, and regenerating islet-derived protein 3- α were also associated with TRM. Our results are consistent with those of adult donor allografts and warrant further prospective evaluation to facilitate future therapeutic intervention to ameliorate severe aGVHD and further improve survival after CBT. (*Blood*. 2015;125(1):199-205)

Introduction

Unrelated donor cord blood (CB) is routinely used as an alternative hematopoietic stem cell (HSC) source for transplantation in patients with high-risk hematologic malignancies, and the use of double-unit grafts has greatly extended the application of CB transplantation (CBT) in adults.^{1,2} However, acute graft-versus-host disease (aGVHD) is common with an incidence of grade II-IV aGVHD of at least 50% in double-unit CBT (DCBT) recipients who received transplants with calcineurin inhibitor–based prophylaxis and no anti-thymocyte globulin.³⁻⁶ Moreover, approximately one-quarter of patients develop grade III-IV disease, and severe aGVHD is a leading source of morbidity and transplant-related mortality (TRM) after CBT.^{4,7}

Plasma biomarkers have emerged as an important tool in the diagnosis of aGVHD after adult donor HSC transplantation. The biomarkers interleukin2 receptor α (IL2R α), tumor necrosis factor receptor 1 (TNFR1), hepatocyte growth factor (HGF), interleukin-8 (IL-8), elafin, and regenerating islet-derived protein 3- α (REG3 α) are associated with the diagnosis of aGVHD and are significantly

associated with the subsequent risk of day 180 TRM in unmodified allograft recipients.⁸⁻¹² Furthermore, levels of the biomarker suppressor of tumorigenicity 2 (ST2) obtained at the time of onset of aGVHD are associated with the risk of treatment-resistant aGVHD and 6-month TRM after aGVHD onset independent of aGVHD clinical grade.¹³

Whether GVHD biomarkers are informative in CBT recipients has not been investigated, and such biomarkers could have significant clinical utility. In a previous analysis at Memorial Sloan Kettering Cancer Center (MSKCC) of 115 recipients of DCBT, we found that the gastrointestinal (GI) tract is the organ most commonly affected in ~80% of patients with grade II-IV aGVHD.⁵ Similarly, Alsultan et al also found that the gut was the predominant organ affected by aGVHD in CBT recipients.¹⁴ Accurate diagnosis of GVHD early after transplantation, however, can be complicated by preparative regimen toxicity, infection, and medication side-effects and tissue biopsy may sometimes have equivocal results after allogeneic transplantation.¹⁵⁻²⁰ Biomarkers could potentially aid in

Submitted June 25, 2014; accepted October 31, 2014. Prepublished online as *Blood* First Edition paper, November 6, 2014; DOI 10.1182/blood-2014-06-584789.

S.P. and J.N.B. contributed equally to this study and are senior co-authors.

The online version of this article contains a data supplement.

There is an Inside *Blood* Commentary on this article in this issue.

The publication costs of this article were defrayed in part by page charge payment. Therefore, and solely to indicate this fact, this article is hereby marked "advertisement" in accordance with 18 USC section 1734.

© 2015 by The American Society of Hematology

early aGVHD diagnosis. Tailoring intensity of aGVHD therapy to the predicted severity of disease prior to clinical manifestations could also be greatly beneficial. Therefore, we investigated the clinical significance of day 28 peripheral blood biomarker levels in DCBT recipients who underwent transplantation at MSKCC. Our hypothesis was that elevated day 28 biomarker levels would be associated with the subsequent development of grade III-IV aGVHD.

Methods

Patients and graft characteristics

This analysis was performed on patients who received transplants at MSKCC between May 1, 2006 and May 31, 2012. All CBT recipients during this time period received double-unit grafts. Patients eligible for this analysis included all consecutive adult and pediatric recipients who achieved donor-derived neutrophil engraftment and had plasma or serum samples obtained at day 28 after DCBT. Of the 113 evaluable patients, 7 developed grade II-IV aGVHD \leq day 28 post-DCBT. These patients were excluded from aGVHD analyses but were evaluable for the TRM analysis. All patients provided written informed consent for transplantation and research specimen collection, and the analysis was approved by the MSKCC Institutional Review/Privacy Board. Research was conducted in accordance with the Declaration of Helsinki.

CB units were selected according to a 4-6/6 HLA-A, -B antigen, -DRB1 allele donor-recipient match, a cryopreserved total nucleated cell (TNC) dose of at least 1.5×10^7 per kg per unit, and the bank of origin.²¹ Unit-unit HLA match was not considered in CB unit selection. High-resolution HLA-A, -B, -C, -DRB1, -DQ allele typing of CB units was done routinely but usually did not influence unit selection. Units were thawed using an albumin-dextran dilution²² (n = 219) or thawed with wash (n = 7).

Conditioning regimen and GVHD prophylaxis

All patients were cared for in high-efficiency particulate air-filtered rooms and received similar supportive care. Pretransplant conditioning varied in intensity according to patient's age, diagnosis, remission status, and comorbidities as previously described.^{5,7} Reduced-intensity regimens were functionally myeloablative. All patients received a calcineurin inhibitor (predominantly cyclosporine A) and mycophenolate mofetil (MMF) prophylaxis starting on day -3 IV as previously described^{5,7} and none received anti-thymocyte globulin (ATG).⁵ Granulocyte-colony-stimulating factor was given posttransplant to promote neutrophil recovery.

Peripheral blood samples

All blood samples (either serum or plasma) were prospectively collected at day 28 after DCBT and stored per institutional guidelines at MSKCC. The frozen samples were batch-shipped to the Paczesny Laboratory at the University of Indiana for analysis. A sequential enzyme-linked immunosorbent assay (ELISA) protocol was used to maximize the number of measured analytes per sample. This technique reuses the same aliquot consecutively in individual ELISA plates. Antibody pairs were purchased as follows: REG3 α from MBL International (Ab-Match Assembly Human PAPI kit and Ab-Match Universal kit), IL-8 OptEIA from Becton Dickinson/BD Biosciences, and all others from R&D Systems. Duoset kits were used for TNFR1, IL2R α , elafin, and HGF, and quantikine kits for ST2 as they permit comparable measurements in plasma or serum. Measurement of ST2 levels by the Duoset kit as previously reported by Vander Lugt et al¹³ was not selected for this study because it only allows measurement of plasma samples. Samples were analyzed in duplicate as previously described.¹³ Laboratory investigators were blinded to all clinical information and transplant outcomes. Pipetting for the REG3 α assay (384-well plate format) was performed using the EpMotion4500 liquid handling system (Eppendorf) and for other assays (96-well plate format) by multichannel. All washes were performed using the Aquamax 2000 plate washer (Molecular Devices). Absorbance was measured immediately after termination of the substrate reaction using

Table 1. Patient and graft demographics of 113 DCBT recipients and 226 units

Characteristics	Value
Median age (range), y	41 (1-69)
Male, N (%)	61 (54)
Recipient CMV seropositive, N (%)	61 (54)
Diagnosis, N (%)	
Acute leukemia	58 (51)
MDS/CML/other MPD	8 (7)
NHL/HL/CLL	47 (42)
Conditioning, N (%)	
High-dose myeloablative	
Cy 120/Flu 75/TBI 1320-1375 cGy	32 (28)
Clo 100/Mel 140/Thio 10	5 (4)
Reduced intensity	
Cy 50/Flu 150/Thio 10/TBI 400 cGy	39 (35)
Mel 140/Flu 150	8 (7)
Nonmyeloablative	
Cy 50/Flu 150/TBI 200 cGy	28 (25)
6-TG, Flu 150/TBI 400 cGy	1 (1)
Donor-recipient HLA-A, -B antigen, -DRB1 allele match, N (%)	
6/6	9 (4)
5/6	115 (51)
4/6	102 (45)
Median infused TNC dose (range)	
Larger unit	2.76×10^7 /kg (1.46-7.19)
Smaller unit	2.02×10^7 /kg (1.13-4.51)
Median infused CD34⁺ dose (range)	
Larger unit	1.33×10^5 /kg (0.41-4.51)
Smaller unit	0.68×10^5 /kg (0.13-2.0)

6-TG, 6-thioguanine; CLL, chronic lymphocytic leukemia; Clo, clofarabine; CML, chronic myelogenous leukemia; CMV, cytomegalovirus; Cy, cyclophosphamide; Flu, fludarabine; HL, Hodgkin lymphoma; MDS, myelodysplastic syndrome; Mel, melphalan; MPD, myeloproliferative disease; NHL, non-Hodgkin lymphoma; TBI, total body irradiation; Thio, Thiotepa; TNC, total nucleated cell dose.

a SpectraMax Plus plate reader (Molecular Devices), and results were calculated using SoftMax Pro, version 6.0 (Molecular Devices).

Study definitions and statistical analysis

GVHD was diagnosed clinically with histologic confirmation when appropriate. Grading was reviewed by a transplant clinician panel to reach a consensus of the maximum aGVHD grade by day 180. Acute and chronic GVHD were graded according to International Bone Marrow Transplant Registry²³ and the National Institutes of Health consensus criteria,²⁴ respectively. Relapse was defined as recurrence or progression of disease beyond the pretransplant baseline, whereas TRM was defined as death from any cause in continued remission. The primary cause of death was defined according to the algorithm of Copelan et al.²⁵

Data on patient characteristics and transplant-related outcomes were obtained from the prospectively maintained MSKCC transplant database verified by primary source documentation. The cumulative incidence of aGVHD and TRM were estimated using cumulative incidence functions, with relapse or death in the absence of aGVHD and relapse considered competing risks for aGVHD and TRM, respectively. A landmark analysis was used for each outcome to account for the fact that selected biomarkers were evaluated at day 28 and not at the time of transplant. Patients were grouped according to being above or below the median day 28 value for each biomarker. Biomarker levels above the median are henceforth described as high whereas levels below the median were considered low. In addition, we generated receiver operating characteristic (ROC) curves to explore other ST2 thresholds as discriminators for grade III-IV aGVHD after day 28 and TRM.²⁶ The area under the ROC curve (AUC) and true-positive and false-positive rates at select ST2 thresholds are presented. The Gray test was used to compare the incidence of aGVHD and TRM across biomarker groups.

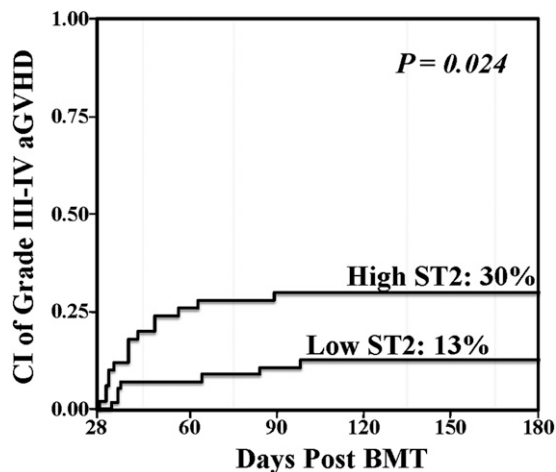


Figure 1. Day 28 landmark analysis of grade III-IV aGVHD according to day 28 ST2 level. Patients who engrafted and were without grade II-IV aGVHD at day 28 were included in the analysis (n = 106). Elevated day 28 ST2 was associated with a significantly increased risk of subsequent severe aGVHD.

Univariate and multivariate Cox proportional hazard regression models were used to further examine the association between ST2 levels and the cause-specific hazard of aGVHD (after day 28) and TRM (all patients). An interaction term with ST2 and each patient and treatment characteristic was fit in a Cox regression model to explore potential modifiers of the ST2 association with GVHD and TRM. The concordance probability estimate (CPE) was analyzed for each multivariate model before and after the inclusion of the ST2 level to evaluate the marginal increase in predictive accuracy (concordance) after the ST2 level inclusion.²⁷ HLA-A, -B, -DRB1 allele match of the dominant unit with the patient was used to analyze the association between HLA-match grade and aGVHD risk after day 28 as this has been shown to have a significant association with aGVHD in a prior analysis at our center.⁵ All analyses were performed using R 3.0.3 (R Development Core Team, 2011).

Results

Patient and graft demographics

Patient demographics are summarized in Table 1. One-hundred thirteen patients, predominantly adults (median age, 41 years) underwent transplantation. Approximately half the patients were male and cytomegalovirus (CMV) seropositive. The most common diagnosis was acute leukemia. The majority received myeloablative or reduced-intensity conditioning, and CB units were predominantly 4-5/6 HLA-A, -B antigen, -DRB1 allele matched to the recipient. Analysis of the distribution of the dominant unit-recipient HLA-A, -B, -DRB1 allele match demonstrated that 83 of 113 (73%) received better HLA-matched CB units (4-6/6 alleles) and the remainder had a very high degree of HLA mismatch when measured at high resolution.

Day 180 aGVHD, 1-year chronic GVHD, and day 180 TRM (all patients)

Overall, 69 of the total 113 patient cohort developed grade II-IV aGVHD prior to day 180 for a day 180 cumulative incidence of 61% (95% confidence interval [CI], 51-69; median onset, 40 days; range, 17-161). Twenty-eight patients had grade III-IV disease (22 grade III, 6 grade IV) for a cumulative incidence of 25% (95% CI, 17-33) by day 180. The GI tract (either upper and/or lower tract) was the organ most commonly affected in 56 of 69 (81%) patients, followed

by the skin (36 of 69, 52%), and the liver was the least commonly involved (9 of 69, 13%). Thirty-four patients had grade II gut aGVHD. Of these, 27 were treated with budesonide as sole treatment, and 23 of these patients responded to therapy with either complete or partial response by day 28 posttreatment. Of the 36 patients affected with skin aGVHD, 18 had stage 1-2, 18 had stage 3, and none had stage 4 disease. The incidence of chronic GVHD at 1 year was 14% (95% CI, 9-21).

The day 180 cumulative incidence of TRM was 14% (95% CI, 9-21). At day 180, 16 patients died of TRM (9 GVHD, 5 organ failure, 2 infection). By 2 years after transplant, the primary transplant-related causes of death included GVHD in 16, organ failure in 6, and infection in 2.

Association between day 28 ST2 levels and subsequent aGVHD risk

In the total group of 113 patients, the median ST2 level was 33.9 ng/mL (interquartile range [IQR], 18.3-75.5). This median value was used as the threshold to evaluate differences in patients with high vs low ST2 levels. The association between day 28 ST2 levels and aGVHD with an onset after day 28 was first evaluated in a total of 106 patients (the 7 patients whose aGVHD onset was ≤day 28 were excluded). Sixty-two in this 106 patient subset developed grade II-IV aGVHD after day 28 with a median onset of 42.5 days (range, 29-161). The cumulative incidence of day 180 grade II-IV aGVHD among patients with high ST2 levels was 66% (95% CI, 51-78) as compared with 52% (95% CI, 38-64) among patients with low ST2 levels (P = .048). Moreover, there was also a significant association between high day 28 ST2 levels and grade III-IV aGVHD when analyzed as above vs below the median (Figure 1, Table 2). The association between lower GI aGVHD involvement and ST2 levels was evaluated. High ST2 level patients had an incidence of grade II-IV aGVHD involving the lower gut at day 180 of 26% (95% CI, 15-39) whereas the incidence in low ST2 level patients was 16% (95% CI, 8-27) (P = .245).

We evaluated the distribution of ST2 levels according to GVHD severity (grade 0-I aGVHD vs II-IV aGVHD). We found that the median ST2 levels were 27.5 ng/mL (IQR, 18.7-66.1) and 38.3 ng/mL (IQR, 17.5-67.7) in these patient groups, respectively, suggesting that the median value of 33.9 ng/mL for the entire patient cohort is an

Table 2. Univariate analysis of factors potentially associated with grade III-IV aGVHD in 106 DCBT recipients

Variable	N	Day 180 grade III-IV aGVHD, % (95% CI)	P
Age, y			
0-15	14	21 (5-46)	.921
≥16	92	21 (13-30)	
Conditioning			
Myeloablative	80	20 (12-29)	.764
Nonmyeloablative	26	23 (9-41)	
Infused total CD3⁺ cell dose			
≤7.74 × 10 ⁶ /kg	55	26 (15-38)	.170
>7.74 × 10 ⁶ /kg	51	16 (7-27)	
Dominant unit-recipient 6 allele HLA match			
Worse HLA match: 2-3/6	28	32 (16-50)	.077
Better HLA match: 4-6/6	78	17 (9-26)	
ST2 level, ng/mL			
Low: ≤33.9	56	13 (5-23)	.024
High: >33.9	50	30% (18-43)	

Table 3. Multivariate analysis of the association between HLA match and day 28 ST2 level on grade III-IV aGVHD in 106 DCBT recipients

Covariate	Hazard ratio (95% CI)	P
Dominant unit-recipient 6 allele		
HLA match		
Worse HLA match: 2-3/6	2.01 (0.86-4.72)	.109
Better HLA match: 4-6/6	Reference	
ST2 level, ng/mL		
Low: ≤33.9	Reference	.036
High: >33.9	2.62 (1.06-6.45)	

appropriate threshold for this analysis. The ROC curve for grade III-IV aGVHD was also generated to explore appropriate ST2 thresholds. The corresponding AUC for the ROC curve level was 0.59 (supplemental Figure 1A, available on the *Blood* Web site). The false-positive rate associated with the median ST2 level was 0.44 whereas the true-positive rate was 0.62.

We evaluated potential risk factors for grade III-IV aGVHD other than the ST2 level in the 106 aGVHD after day 28 patient cohort. We first evaluated the distribution of day 28 ST2 levels according to the conditioning regimen. Of the 106 patient cohort, 80 received myeloablative conditioning and had a median ST2 level of 34.0 ng/mL (IQR, 18.5-68.5) whereas the 26 recipients of nonmyeloablative conditioning had a median ST2 level of 26.2 ng/mL (IQR, 17.1-59.9) ($P = .252$). We then performed a univariate analysis to test the association between potential risk factors and day 180 grade III-IV aGVHD (Table 2). There was no association with patient age (0-15 vs ≥16 years), conditioning regimen intensity (myeloablative vs nonmyeloablative), or infused total CD3⁺ cell dose per kg. The dominant unit-recipient high-resolution HLA-A, -B, -DRB1 allele match (2-3/6 vs 4-6/6) showed a trend toward significance ($P = .077$). No patient or treatment characteristic significantly modified the ST2 association with GVHD (data not shown).

In a multivariate analysis including day 28 ST2 levels and dominant unit-recipient HLA-allele match, a high day 28 ST2 level was independently associated with an increased risk of subsequent grade III-IV aGVHD (hazard ratio, 2.62 [95% CI, 1.06-6.45], $P = .036$) whereas dominant unit-recipient HLA-allele match was no longer significant (Table 3). The CPE for HLA match alone was 0.57, and this increased to 0.65 when ST2 was added.

Association between day 28 ST2 levels and TRM

All 113 patients were assessed for the association between ST2 level and day 180 TRM. High day 28 ST2 levels were associated with substantially increased TRM with a cumulative incidence at day 180 post-DCBT of 23% (95% CI, 13-35) as compared with 5% (95% CI, 1-13) in the low ST2 level group ($P = .001$) (Table 4, Figure 2). The ROC curve had a corresponding AUC of 0.75. The false-positive and true-positive rates at the ST2 median value were 0.49 and 0.78, respectively (supplemental Figure 1B). Of the 19 of 56 patients with high day 28 ST2 levels who died of transplant-related causes, GVHD was the most common cause (12 of 19 [63%] deaths) with a median time to GVHD death of 173 days (range, 70-465). Of those, aGVHD developed in all patients and 2 had subsequent overlap syndrome (1 mild, 1 severe). Organ failure (exclusively pulmonary) was the second most common cause of death in this group ($n = 6$) and infection was the least common ($n = 1$). In contrast, during the period of the study only 5 of 57 patients with low day 28 ST2 levels died of transplant-related causes. Their primary causes of death were GVHD ($n = 4$) or infection ($n = 1$).

Univariate analysis for other risk factors potentially associated with TRM showed that conditioning regimen (myeloablative vs nonmyeloablative), dominant unit TNC dose × 10⁷/kg, dominant unit CD34⁺ cell dose × 10⁵/kg, and dominant unit-recipient high-resolution HLA allele match (2-3/6 vs 4-6/6) were not significant (Table 4). In contrast, older patient age (≥16 years) and positive recipient CMV serology were associated with an increased TRM. There was no evidence that the ST2 association with TRM was modified by any patient or clinical factor (data not shown). Multivariate analysis revealed that both recipient CMV positivity (hazard ratio, 2.59 [95% CI, 1.02-6.59]) and a high day 28 ST2 level (hazard ratio, 4.21 [95% CI, 1.57-11.30]) were associated with an increased TRM risk whereas age was not (hazard ratio, 1.02 [95% CI, 1.00-1.05]) (Table 5). The CPE estimated for the multivariate model without ST2 was 0.68, and this increased to 0.74 with the inclusion of ST2.

Other biomarkers

The association between other day 28 biomarkers (TNFR1, IL-8, REG3α, IL2Rα, elafin, and HGF) and transplant outcomes was also analyzed. Although biomarker concentrations greater than the median of TNFR1 (>4792 pg/mL), IL-8 (>51 pg/mL), and REG3α (>42 ng/mL) were not associated with differences in grade II-IV or III-IV aGVHD, they were significantly associated with increased TRM. Similar to high ST2 levels, GVHD was the predominant cause of transplant-related death in patients with high levels followed by pulmonary toxicity. In contrast, biomarker concentrations greater than the median of IL2Rα (>2426 pg/mL), elafin (>5155 pg/mL), and HGF (>940 pg/mL) were not associated with either grade II-IV and III-IV aGVHD or TRM (Table 6).

Discussion

CB allografts are routinely transplanted with very high levels of donor-recipient HLA mismatch^{5,28,29} and yet the incidence of GVHD

Table 4. Univariate analysis of factors potentially associated with TRM including day 28 ST2 level in 113 DCBT recipients

Variable	N	Day 180 TRM, % (95% CI)	P
Age, y			
0-15	15	0 (NA)	.034
≥16	98	16 (10-24)	
Recipient CMV serostatus			
Seronegative	52	2 (0-9)	.013
Seropositive	61	25 (15-36)	
Conditioning			
Myeloablative	84	13 (7-21)	.632
Nonmyeloablative	29	17 (6-33)	
Dominant unit TNC dose			
<2.22 × 10 ⁷ /kg	56	14 (7-25)	.654
≥2.22 × 10 ⁷ /kg	57	14 (7-24)	
Dominant unit CD34⁺ cell dose			
<1 × 10 ⁵ /kg	56	14 (7-25)	.363
≥1 × 10 ⁵ /kg	57	14 (7-24)	
Dominant unit-recipient 6 allele			
HLA match			
Worse HLA match: 2-3/6	30	20 (8-36)	.153
Better HLA match: 4-6/6	83	12 (6-20)	
ST2 level, ng/mL			
Low: ≤33.9	57	5 (1-13)	.001
High: >33.9	56	23 (13-35)	

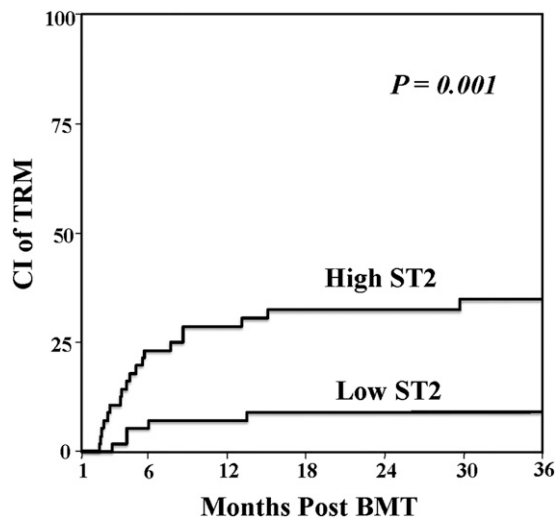


Figure 2. Day 28 landmark analysis of TRM according to day 28 ST2 level in 113 DCBT recipients. DCBT recipients with elevated day 28 ST2 had a significantly increased risk of TRM.

after CBT is lower than expected for the degree of HLA mismatch. However, GVHD is a significant complication of CBT and although it can be abrogated by ATG, in vivo T-cell depletion has the disadvantage of the potential abrogation of graft-versus-leukemia effects after reduced-intensity allografts³⁰ and a high risk of opportunistic infections.³¹⁻³⁴ Our center has elected to pursue CBT with an ATG-free platform and although CBT GVHD can be highly corticosteroid responsive, a minority of patients will develop severe or lethal disease.⁵ Moreover, we have previously reported that it is acute disease that is the major challenge in CBT, and although some patients will evolve into an overlap syndrome, de novo classical chronic GVHD is very uncommon.⁵ Therefore, a peripheral blood assay that could provide both diagnosis and prognostication of aGVHD severity early after transplantation would be ideal for designing risk-adapted clinical trials and tailoring immunosuppression intensity in CBT recipients.

ST2 is the receptor of IL-33 and is present in 2 isoforms: a membrane form expressed on hematopoietic cells, especially T helper 2 (Th2) cells, and a soluble form secreted by endothelial cells, epithelial cells, and fibroblasts in response to inflammatory stimuli.³⁵ Soluble ST2 acts as a decoy receptor for IL-33 limiting its access to Th2 cells and promoting the Th1 phenotype which has been associated in aGVHD pathophysiology.^{36,37} In this study, we show for the first time that an elevated ST2 level is independently associated with an increased risk of grade II-IV and III-IV aGVHD in recipients of double-unit CB grafts. It is well established that donor-recipient HLA match is a critical determinant of CBT outcome including an association with aGVHD and TRM.^{5,38,39} Nonetheless, not all recipients of highly mismatched CB grafts suffer severe aGVHD, and in this analysis elevated ST2 level for severe aGVHD added predictive value beyond dominant unit-recipient 6 allele HLA match. This finding is important as, although many centers are now appropriately selecting CB units based on high-resolution HLA match, some patients will still receive units with a high degree of mismatch. Therefore, our findings warrant further investigation in a larger cohort to be able to analyze the additional value of ST2 levels, especially in recipients of highly HLA-mismatched grafts.

Importantly, a high day 28 ST2 level was also predictive of increased TRM. Notably, the association with TRM is consistent

with that of adult donor allograft recipients.¹³ That aGVHD was the predominant cause of death in patients with high day 28 ST2 levels reinforces the potential clinical utility of early detection of elevated levels and early therapeutic intervention especially as aGVHD onset is after day 28 in the majority of patients. However, the optimal time to measure biomarkers is yet to be determined and, in our analysis, 7 patients developed GVHD \leq day 28. Prospective evaluation of serial biomarker measurements from very early posttransplant and at the time of GVHD diagnosis is needed to refine the predictive value of these assays in CBT. In addition, although the median ST2 value had good overall performance relative to other potential thresholds, additional studies should further explore alternatives and elucidate the categorization with the highest clinical utility. Whether ST2 levels, for example, will also provide prognostic information independent of aGVHD grade also requires investigation. In the future, early or preemptive interventions based on high biomarker levels could be evaluated. Targeting higher therapeutic calcineurin inhibitor levels,⁴⁰⁻⁴³ delaying MMF taper,⁵ dosing MMF according to therapeutic trough levels,^{44,45} manipulating gut flora,⁴⁶ tailoring the dose of systemic corticosteroids for aGVHD treatment, or treating with IL-22⁴⁷ are all possible strategies.

We found that the ST2 values in this analysis were different from that reported by Vander Lugt et al.¹³ The likely explanation for this is the use of the more reliable ST2 quantikine kit in this analysis. This emphasizes the need to strictly standardize ST2 testing methodology in future studies. It is also possible that the clinically relevant threshold for this biomarker could differ among HSC sources. Therefore, algorithms to assign specific thresholds for intervention by HSC source will need to be established, ideally by prospective multicenter trials. Additionally, patients with high day 28 ST2 levels who died of organ toxicity had exclusively lung involvement. It would be beneficial to understand the mechanism of the association between ST2 elevation and pulmonary toxicity. One possible explanation is that the pulmonary toxicity is due to idiopathic pneumonia syndrome (IPS). This has been considered an aGVHD equivalent in the lungs by some investigators.⁴⁸

Whether the other biomarkers (TNFR1, IL-8, REG3 α , IL2R α , elafin, and HGF) evaluated in this study have additional prognostic importance is unclear. A significant negative finding in this study was the lack of an association between elafin levels and aGVHD. This could be due to very few patients having stage 3 skin aGVHD and none having stage 4 disease. The corticosteroid responsiveness of skin aGVHD that has been observed in nearly all CBT recipients in our center may also be relevant. However, analysis in a larger population is needed to further investigate this question. It is notable that although elevated levels of TNFR1, IL-8, and REG3 α were not associated with the incidence of grade II-IV and III-IV aGVHD, they were associated with aGVHD lethality. Thus, elevation of these biomarkers could further support the

Table 5. Multivariate analysis of the association between age, recipient CMV serostatus, and ST2 level on TRM in 113 DCBT recipients

Covariate	Hazard ratio (95% CI)	P
Age*	1.02 (1.00-1.05)	.096
Recipient CMV serostatus		
Seronegative	Reference	.046
Seropositive	2.59 (1.02-6.59)	
ST2 level, ng/mL		
Low: \leq 33.9	Reference	.004
High: $>$ 33.9	4.21 (1.57-11.30)	

*Continuous variable.

Table 6. Association of TNFR1, IL-8, REG3 α , IL2R α , Elafin, and HGF with grade II-IV aGVHD, grade III-IV aGVHD, and TRM in 113 DCBT recipients

Day 28 biomarker	Day 180 Grade II-IV aGVHD, % (95% CI)	P	Day 180 Grade III-IV aGVHD, % (95% CI)	P	Day 180 TRM, % (95% CI)	P
TNFR1, pg/mL						
≤4792	60 (46-72)	.749	23 (12-35)	.645	5 (1-13)	.005
>4792	57 (42-69)		19 (10-31)		23 (13-35)	
IL-8, pg/mL						
≤51	59 (45-71)	.822	15 (7-26)	.147	5 (1-13)	.005
>51	58 (43-70)		27 (16-40)		23 (13-35)	
REG3α, ng/mL						
≤42	59 (44-71)	.922	25 (14-37)	.361	5 (1-13)	.032
>42	59 (44-71)		17 (8-28)		24 (13-36)	
IL2Rα, pg/mL						
≤2426	57 (42-69)	.830	21 (11-33)	.978	12 (5-22)	.081
>2426	60 (46-72)		21 (11-33)		16 (8-27)	
Elafin, pg/mL						
≤5155	56 (41-68)	.283	21 (11-33)	.996	11 (4-20)	.296
>5155	61 (47-73)		20 (11-32)		18 (9-29)	
HGF, pg/mL						
≤940	64 (49-76)	.368	25 (14-37)	.388	12 (5-22)	.919
>940	53 (39-65)		17 (8-28)		16 (8-27)	

identification of a patient at significant TRM risk and further prospective evaluation addressing this question is indicated. It would be important to establish whether measurement of biomarkers earlier after CBT is also predictive of severe aGVHD and TRM given earlier intervention may be more effective than at 4 weeks posttransplantation. Additionally, understanding the role of ST2 levels in predicting treatment response or the subsequent evolution to overlap syndrome or development of chronic classic GVHD is required. The ultimate aim of these studies is to ameliorate severe GVHD and further improve survival in CBT recipients.

Acknowledgments

The authors acknowledge the nursing staff, transplant coordinators, and the Hsu and Brentjens Laboratories who greatly contributed to this work.

S.P. was supported by the National Cancer Institute, National Institutes of Health R01CA174667, and the Lilly Physician Scientist Initiative Program. At MSKCC, this work was supported in part by the Gabrielle's Angel Foundation for Cancer Research (J.N.B.), the Society of MSKCC (J.N.B. and S.G.), the MSKCC Translational

and Integrative Medicine Research Program (J.N.B.), P01 CA23766 from the National Cancer Institute, National Institutes of Health (J.N.B., M.-A.P., M.R.M.v.d.B., and R.J.O.), and P30 CA008748 (P.H. and S.M.D.).

Authorship

Contribution: D.M.P. interpreted the data and wrote the manuscript; S.P. and J.N.B. designed the study, interpreted the data, and wrote the manuscript; P.H. and S.M.D. analyzed the data and wrote the manuscript; C.M. and M.L. collected the data; and S.G., J.D.G., A.H., K.H., R.J., M.-A.P., C.S., M.R.M.v.d.B., J.W.Y., R.B., N.A.K., S.E.P., R.J.O., and A.S. wrote the manuscript.

Conflict-of-interest disclosure: R.B. is a cofounder of, stockholder in, and consultant of Juno Therapeutics. S.P. has a patent on "Methods of detection of graft-versus-host disease" licensed to Viracor-IBT Laboratories. The remaining authors declare no competing financial interests.

Correspondence: Doris M. Ponce, Box 259, 1275 York Ave, New York, NY, 10065; e-mail: ponced@mskcc.org.

References

- Barker JN, Byam CE, Kernan NA, et al. Availability of cord blood extends allogeneic hematopoietic stem cell transplant access to racial and ethnic minorities. *Biol Blood Marrow Transplant*. 2010;16(11):1541-1548.
- Scaradavou A, Brunstein CG, Eapen M, et al. Double unit grafts successfully extend the application of umbilical cord blood transplantation in adults with acute leukemia. *Blood*. 2013;121(5):752-758.
- Brunstein CG, Barker JN, Weisdorf DJ, et al. Umbilical cord blood transplantation after nonmyeloablative conditioning: impact on transplantation outcomes in 110 adults with hematologic disease. *Blood*. 2007;110(8):3064-3070.
- MacMillan ML, Weisdorf DJ, Brunstein CG, et al. Acute graft-versus-host disease after unrelated donor umbilical cord blood transplantation: analysis of risk factors. *Blood*. 2009;113(11):2410-2415.
- Ponce DM, Gonzales A, Lubin M, et al. Graft-versus-host disease after double-unit cord blood transplantation has unique features and an association with engrafting unit-to-recipient HLA match. *Biol Blood Marrow Transplant*. 2013;19(6):904-911.
- Brunstein CG, Gutman JA, Weisdorf DJ, et al. Allogeneic hematopoietic cell transplantation for hematologic malignancy: relative risks and benefits of double umbilical cord blood. *Blood*. 2010;116(22):4693-4699.
- Ponce DM, Zheng J, Gonzales AM, et al. Reduced late mortality risk contributes to similar survival after double-unit cord blood transplantation compared with related and unrelated donor hematopoietic stem cell transplantation. *Biol Blood Marrow Transplant*. 2011;17(9):1316-1326.
- Paczesny S, Krijanovski OI, Braun TM, et al. A biomarker panel for acute graft-versus-host disease. *Blood*. 2009;113(2):273-278.
- Paczesny S, Braun TM, Levine JE, et al. Elafin is a biomarker of graft-versus-host disease of the skin. *Sci Transl Med*. 2010;2(13):ra2.
- Ferrara JL, Harris AC, Greenson JK, et al. Regenerating islet-derived 3-alpha is a biomarker of gastrointestinal graft-versus-host disease. *Blood*. 2011;118(25):6702-6708.
- Harris AC, Ferrara JL, Braun TM, et al. Plasma biomarkers of lower gastrointestinal and liver acute GVHD. *Blood*. 2012;119(12):2960-2963.
- Levine JE, Logan BR, Wu J, et al. Acute graft-versus-host disease biomarkers measured during therapy can predict treatment outcomes: a Blood

- and Marrow Transplant Clinical Trials Network study. *Blood*. 2012;119(16):3854-3860.
13. Vander Lugt MT, Braun TM, Hanash S, et al. ST2 as a marker for risk of therapy-resistant graft-versus-host disease and death. *N Engl J Med*. 2013;369(6):529-539.
 14. Alsultan A, Giller RH, Gao D, et al. GVHD after unrelated cord blood transplant in children: characteristics, severity, risk factors and influence on outcome. *Bone Marrow Transplant*. 2011;46(5):668-675.
 15. Snover DC. Mucosal damage simulating acute graft-versus-host reaction in cytomegalovirus colitis. *Transplantation*. 1985;39(6):669-670.
 16. Bombi JA, Nadal A, Carreras E, et al. Assessment of histopathologic changes in the colonic biopsy in acute graft-versus-host disease. *Am J Clin Pathol*. 1995;103(6):690-695.
 17. Ponc R, Hackman RC, McDonald GB. Endoscopic and histologic diagnosis of intestinal graft-versus-host disease after marrow transplantation. *Gastrointest Endosc*. 1999;49(5):612-621.
 18. Liakopoulou E, Mutton K, Carrington D, et al. Rotavirus as a significant cause of prolonged diarrhoeal illness and morbidity following allogeneic bone marrow transplantation. *Bone Marrow Transplant*. 2005;36(8):691-694.
 19. Selbst MK, Ahrens WA, Robert ME, Friedman A, Proctor DD, Jain D. Spectrum of histologic changes in colonic biopsies in patients treated with mycophenolate mofetil. *Mod Pathol*. 2009;22(6):737-743.
 20. Alonso CD, Treadway SB, Hanna DB, et al. Epidemiology and outcomes of Clostridium difficile infections in hematopoietic stem cell transplant recipients. *Clin Infect Dis*. 2012;54(8):1053-1063.
 21. Barker JN, Byam C, Scaradavou A. How I treat: the selection and acquisition of unrelated cord blood grafts. *Blood*. 2011;117(8):2332-2339.
 22. Barker JN, Abboud M, Rice RD, et al. A "no-wash" albumin-dextran dilution strategy for cord blood unit thaw: high rate of engraftment and a low incidence of serious infusion reactions. *Biol Blood Marrow Transplant*. 2009;15(12):1596-1602.
 23. Rowlings PA, Przepiorka D, Klein JP, et al. IBMTR Severity Index for grading acute graft-versus-host disease: retrospective comparison with Glucksberg grade. *Br J Haematol*. 1997;97(4):855-864.
 24. Filipovich AH, Weisdorf D, Pavletic S, et al. National Institutes of Health consensus development project on criteria for clinical trials in chronic graft-versus-host disease: I. Diagnosis and staging working group report. *Biol Blood Marrow Transplant*. 2005;11(12):945-956.
 25. Copelan E, Casper JT, Carter SL, et al. A scheme for defining cause of death and its application in the T cell depletion trial. *Biol Blood Marrow Transplant*. 2007;13(12):1469-1476.
 26. Saha P, Heagerty PJ. Time-dependent predictive accuracy in the presence of competing risks. *Biometrics*. 2010;66(4):999-1011.
 27. Gonen M, Heller G. Concordance probability and discriminatory power in proportional hazards regression. *Biometrika*. 2005;92(4):965-970.
 28. Eapen M, Klein JP, Sanz GF, et al; Eurocord-European Group for Blood and Marrow Transplantation; Netcord; Center for International Blood and Marrow Transplant Research. Effect of donor-recipient HLA matching at HLA A, B, C, and DRB1 on outcomes after umbilical-cord blood transplantation for leukaemia and myelodysplastic syndrome: a retrospective analysis. *Lancet Oncol*. 2011;12(13):1214-1221.
 29. Dahi PB, Ponce DM, Devlin S, et al. Donor-recipient allele-level HLA matching of unrelated cord blood units reveals high degrees of mismatch and alters graft selection. *Bone Marrow Transplant*. 2014;49(9):1184-1186.
 30. Soiffer RJ, Leraudemacher J, Ho V, et al. Impact of immune modulation with anti-T-cell antibodies on the outcome of reduced-intensity allogeneic hematopoietic stem cell transplantation for hematologic malignancies. *Blood*. 2011;117(25):6963-6970.
 31. Brunstein CG, Weisdorf DJ, DeFor T, et al. Marked increased risk of Epstein-Barr virus-related complications with the addition of antithymocyte globulin to a nonmyeloablative conditioning prior to unrelated umbilical cord blood transplantation. *Blood*. 2006;108(8):2874-2880.
 32. Chen YB, Aldridge J, Kim HT, et al. Reduced-intensity conditioning stem cell transplantation: comparison of double umbilical cord blood and unrelated donor grafts. *Biol Blood Marrow Transplant*. 2012;18(5):805-812.
 33. Sanz J, Arango M, Senent L, et al. EBV-associated post-transplant lymphoproliferative disorder after umbilical cord blood transplantation in adults with hematological diseases. *Bone Marrow Transplant*. 2014;49(3):397-402.
 34. Lindemans CA, Chiesa R, Amrolia PJ, et al. Impact of thymoglobulin prior to pediatric unrelated umbilical cord blood transplantation on immune reconstitution and clinical outcome. *Blood*. 2014;123(1):126-132.
 35. Dinarello CA. Interleukin-1 in the pathogenesis and treatment of inflammatory diseases. *Blood*. 2011;117(14):3720-3732.
 36. Schmitz J, Owyang A, Oldham E, et al. IL-33, an interleukin-1-like cytokine that signals via the IL-1 receptor-related protein ST2 and induces T helper type 2-associated cytokines. *Immunity*. 2005;23(5):479-490.
 37. Garlanda C, Dinarello CA, Mantovani A. The interleukin-1 family: back to the future. *Immunity*. 2013;39(6):1003-1018.
 38. Barker JN, Scaradavou A, Stevens CE. Combined effect of total nucleated cell dose and HLA match on transplantation outcome in 1061 cord blood recipients with hematologic malignancies. *Blood*. 2010;115(9):1843-1849.
 39. Eapen M, Klein JP, Ruggeri A, et al; Center for International Blood and Marrow Transplant Research, Netcord, Eurocord, and the European Group for Blood and Marrow Transplantation. Impact of allele-level HLA matching on outcomes after myeloablative single unit umbilical cord blood transplantation for hematologic malignancy. *Blood*. 2014;123(1):133-140.
 40. Malard F, Szydlo RM, Brissot E, et al. Impact of cyclosporine-A concentration on the incidence of severe acute graft-versus-host disease after allogeneic stem cell transplantation. *Biol Blood Marrow Transplant*. 2010;16(1):28-34.
 41. Mori T, Kato J, Shimizu T, et al. Effect of early posttransplantation tacrolimus concentration on the development of acute graft-versus-host disease after allogeneic hematopoietic stem cell transplantation from unrelated donors. *Biol Blood Marrow Transplant*. 2012;18(2):229-234.
 42. Ram R, Storer B, Mielcarek M, et al. Association between calcineurin inhibitor blood concentrations and outcomes after allogeneic hematopoietic cell transplantation. *Biol Blood Marrow Transplant*. 2012;18(3):414-422.
 43. Rogosheske JR, Fargen AD, DeFor TE, et al. Higher therapeutic CsA levels early post transplantation reduce risk of acute GVHD and improves survival. *Bone Marrow Transplant*. 2014;49(1):122-125.
 44. Jacobson PA, Huang J, Wu J, et al. Mycophenolate pharmacokinetics and association with response to acute graft-versus-host disease treatment from the Blood and Marrow Transplant Clinical Trials Network. *Biol Blood Marrow Transplant*. 2010;16(3):421-429.
 45. Harnicar S, Ponce DM, Mathew S, et al. Higher mycophenolic acid (MPA) trough levels result in lower day 100 severe acute graft-versus-disease disease (aGVHD) without increased toxicity in double-unit cord blood transplantation (CBT) recipients. *Biol Blood Marrow Transplant*. 2014;20(2):S52-S53.
 46. Jenq RR, Ubeda C, Taur Y, et al. Regulation of intestinal inflammation by microbiota following allogeneic bone marrow transplantation. *J Exp Med*. 2012;209(5):903-911.
 47. Hanash AM, Dudakov JA, Hua G, et al. Interleukin-22 protects intestinal stem cells from immune-mediated tissue damage and regulates sensitivity to graft versus host disease. *Immunity*. 2012;37(2):339-350.
 48. Cooke KR, Kobzik L, Martin TR, et al. An experimental model of idiopathic pneumonia syndrome after bone marrow transplantation: I. The roles of minor H antigens and endotoxin. *Blood*. 1996;88(8):3230-3239.



blood[®]

2015 125: 199-205

doi:10.1182/blood-2014-06-584789 originally published
online November 6, 2014

High day 28 ST2 levels predict for acute graft-versus-host disease and transplant-related mortality after cord blood transplantation

Doris M. Ponce, Patrick Hilden, Christen Mumaw, Sean M. Devlin, Marissa Lubin, Sergio Giral, Jenna D. Goldberg, Alan Hanash, Katharine Hsu, Robert Jenq, Miguel-Angel Perales, Craig Sauter, Marcel R. M. van den Brink, James W. Young, Renier Brentjens, Nancy A. Kernan, Susan E. Prockop, Richard J. O'Reilly, Andromachi Scaradavou, Sophie Paczesny and Juliet N. Barker

Updated information and services can be found at:

<http://www.bloodjournal.org/content/125/1/199.full.html>

Articles on similar topics can be found in the following Blood collections

[Free Research Articles](#) (4901 articles)

[Transplantation](#) (2269 articles)

Information about reproducing this article in parts or in its entirety may be found online at:

http://www.bloodjournal.org/site/misc/rights.xhtml#repub_requests

Information about ordering reprints may be found online at:

<http://www.bloodjournal.org/site/misc/rights.xhtml#reprints>

Information about subscriptions and ASH membership may be found online at:

<http://www.bloodjournal.org/site/subscriptions/index.xhtml>