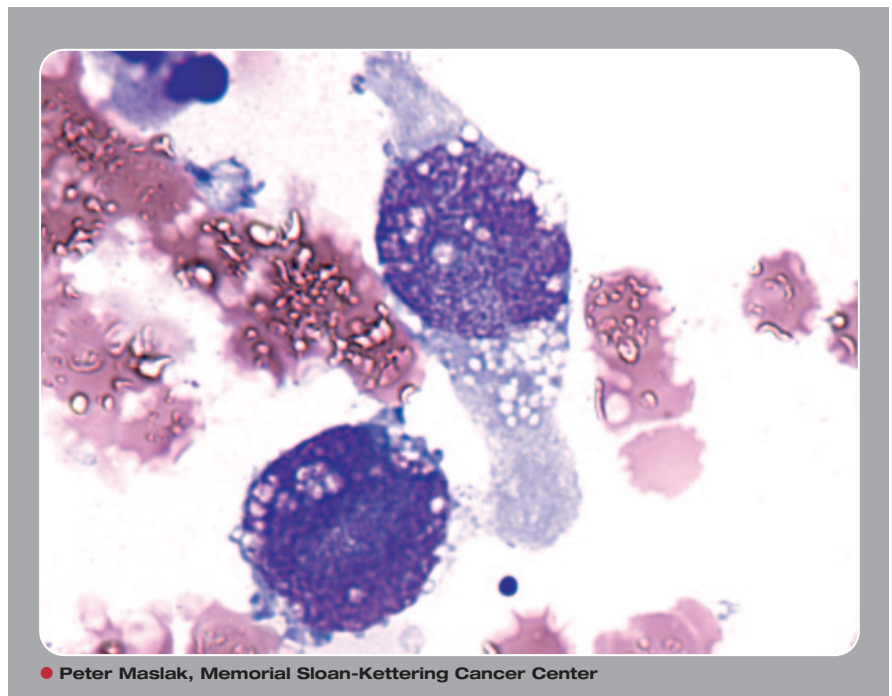


Rhabdomyosarcoma



The so-called “small, round blue-cell tumors” may resemble hematopoietic blasts. These diseases may present with clinical features similar to acute leukemia. Metastatic rhabdomyosarcoma cells may have a characteristic racquet-shaped appearance with numerous vacuoles.



Many Blood Work images are provided by the **ASH IMAGE BANK**, a reference and teaching tool that is continually updated with new atlas images and images of case studies. For more information or to contribute to the Image Bank, visit www.ashimagebank.org.



Rhabdomyosarcoma

Updated information and services can be found at:
<http://www.bloodjournal.org/content/105/5/1849.full.html>

Articles on similar topics can be found in the following Blood collections
[BloodWork](#) (716 articles)

Information about reproducing this article in parts or in its entirety may be found online at:
http://www.bloodjournal.org/site/misc/rights.xhtml#repub_requests

Information about ordering reprints may be found online at:
<http://www.bloodjournal.org/site/misc/rights.xhtml#reprints>

Information about subscriptions and ASH membership may be found online at:
<http://www.bloodjournal.org/site/subscriptions/index.xhtml>